

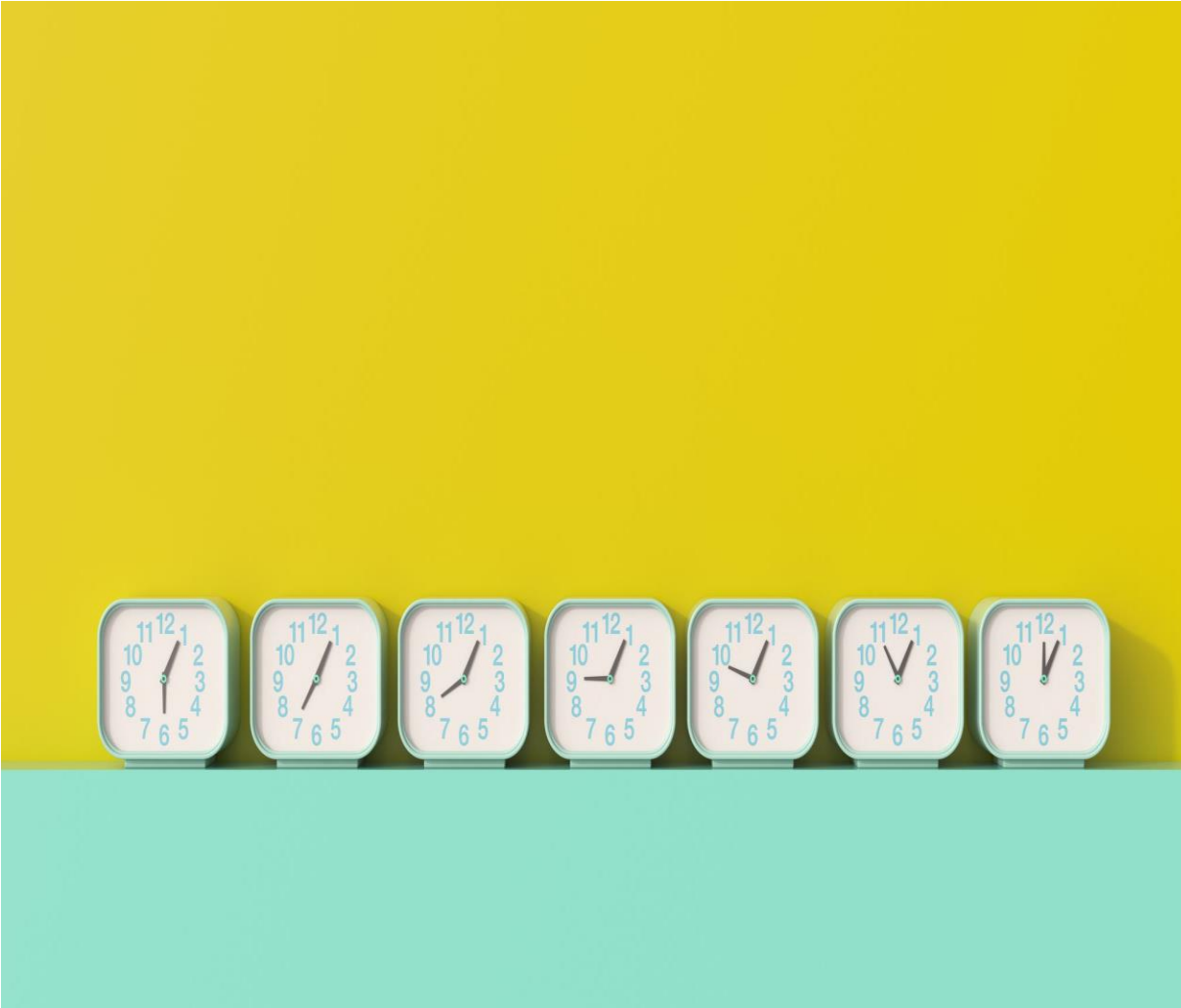
STUDENT & PARENT
RESPONSIBILITIES &
EXPECTATIONS @ GROSSE
ISLE SCHOOL

Welcome Back

What we expect of YOU:

- **I am respectful**
 - With my words, actions, volume and my tone
- **I am kind**
 - To myself and others
- **I am attentive**
 - To what is being asked of me and of the space around me
- **I am responsible**
 - For my words, my actions, my possessions and my privileges
- **I am honest**
 - Acknowledging my mistakes, is how I learn and grow
 - I ask for help when I need it





DOORS OPEN IN THE MORNING FOR STUDENTS AT 8:20AM

BUSES ARE MOVING IN THE LOOP BETWEEN 825 – 835AM & 335 – 350PM DURING THAT TIME, CARS ARE ASKED TO REMAIN PARKED

FIRST BELL IS AT 845 AND SECOND (WHEN STUDENTS ARE ASKED TO BE IN THEIR CLASSROOMS) IS AT 855 WITH O'CANADA AND MORNING ANNOUNCEMENTS AT 9

OUR FRONT DOORS ARE **LOCKED** – IF YOU ARE PICKING UP OR COMING FOR A MEETING, YOU WILL NEED TO BE BUZZED IN

Dress Code

- The expectation at Grosse Isle School is that students are dressed so they can safely participate in all activities throughout the day
 - Eg. Wearing a snowsuit in June in school could be dangerous and would limit their ability to participate equitably in either break or physical education classes
- Certain clothing may be considered as inappropriate for school and school events. This includes, but is not restricted to:
 - any article or apparel which displays obscene words, pictures, or designs;
 - any article that conveys a sexually suggestive remark, demonic image, a pro-alcohol message, a tobacco message, or a pro-drug message. A
 - ll students attending class must wear clothing that is suitable for daily wear and must dress in a manner that is not unduly threatening.
 - Bandanas or any clothing that suggests a gang affiliation (including gang colours and gang markings) will not be tolerated at the school.
 - Students are expected to wear appropriate clothing in the school at all times during the school day.
 - While interpretation of these terms is necessary and community standards change through time, current expectations are the following:
 - caps and other types of head wear may be allowed provided they are removed as a part of respectful protocol (for example, during ceremonies);
 - concealing clothing (for example, large bulky jackets, trench coats, etc.) are not to be worn inside the school;
 - and any inappropriate body piercings should be covered up.
 - [Link: Interlake School Division Administrative Procedure 3070](#)





Respect for Human Diversity

- EVERYONE is welcome in this building and on your bus
- It is **everyone's job** to make everyone feel welcomed and safe in this building (or bus) no matter their skin colour, religion, where they come from, where they live, what their parents do, gender identity or expression, sexual orientation, weight, advantages, disadvantages, or abilities
 - This is based on the Charter of Human Rights and Freedoms, and the Manitoba Human Rights Code

Code of Conduct – Students

- Students are expected to practice appropriate behaviour, at all times. This includes:
 - Being responsible for your words and actions
 - When you make a mistake, accept that there may be consequences, help repair it, and move on
 - If you need help doing any of the above, Ms. Crow will help!
 - Showing respect for the rights, property and safety of themselves and others
 - Respecting and appreciating the diversity of all school members regardless of their race, culture, ethnicity, religion, gender, sexual orientation, age or ability
 - Expressing themselves with respectful and inclusive language and behaviour;
 - Using electronic devices and technologies in an ethical and appropriate manner;
 - Exhibiting behaviour that avoids all forms of intimidation, harassment and discrimination of any kind
 - Attending classes, activities and events, and being prepared and on-time
 - Showing courtesy and respect for the rights of all people in the school and in the community
 - Demonstrating behaviour that contributes to a supportive, inclusive and safe learning environment
 - Resolving interpersonal conflicts and difficulties through discussion or by seeking assistance from school personnel
 - Growing and developing self-discipline
- Weapons, violence, threats of violence, vandalism, disrespectful or derogatory language directed at an individual will result in immediate consequences which will vary in penalty and severity depending on the action



Code of Conduct – School Adults

- Students can expect from adults:
 - the freedom to risk learning new things without fear of making a mistake, in an environment of respect and acceptance
 - encouragement, support, recognition, effective instruction, guidance and appropriate resources;
 - recognition and acknowledgment of their unique talents, skills and qualities
 - the freedom from harassment, intimidation (e.g. labelling, name-calling, ridicule, taunting, criticism or contempt) and threat of physical harm from adults or peers
 - the freedom to make choices, influence their own learning and pursue personal interests
 - the freedom to have (and appropriately express) their own feelings and opinions without fear of reprisal.
- ISD staff are responsible for the following:
 - treating parents, students and fellow staff with dignity and respect at all times
 - participating and cooperating with parents/guardians and other school staff in the development and implementation of plans to address the learning needs of students
 - communicating information about student behaviour to parents/guardians and administration as appropriate
 - establishing and maintaining a secure, non-threatening and inclusive learning environment
 - using electronic devices and technologies in an ethical and appropriate manner
 - providing an environment that promotes self-esteem and self-discipline and responding to all behaviour detrimental to physical and emotional safety of students in their care
 - teaching and modelling appropriate behaviour
 - incorporating those aspects of learning about diversity that are appropriate to the age of their students.



Code of Conduct – Parents

Parents and Guardians can reasonably expect:

- be informed regularly of the attendance, behaviour and academic achievement of their child in school
- consult with their child's teacher or other employee of the Division about the child's program and academic achievement
- receive information about programs available to his or her child
- be informed of the discipline and behaviour management policies of the school or school division and to be consulted before the policies are established or revised

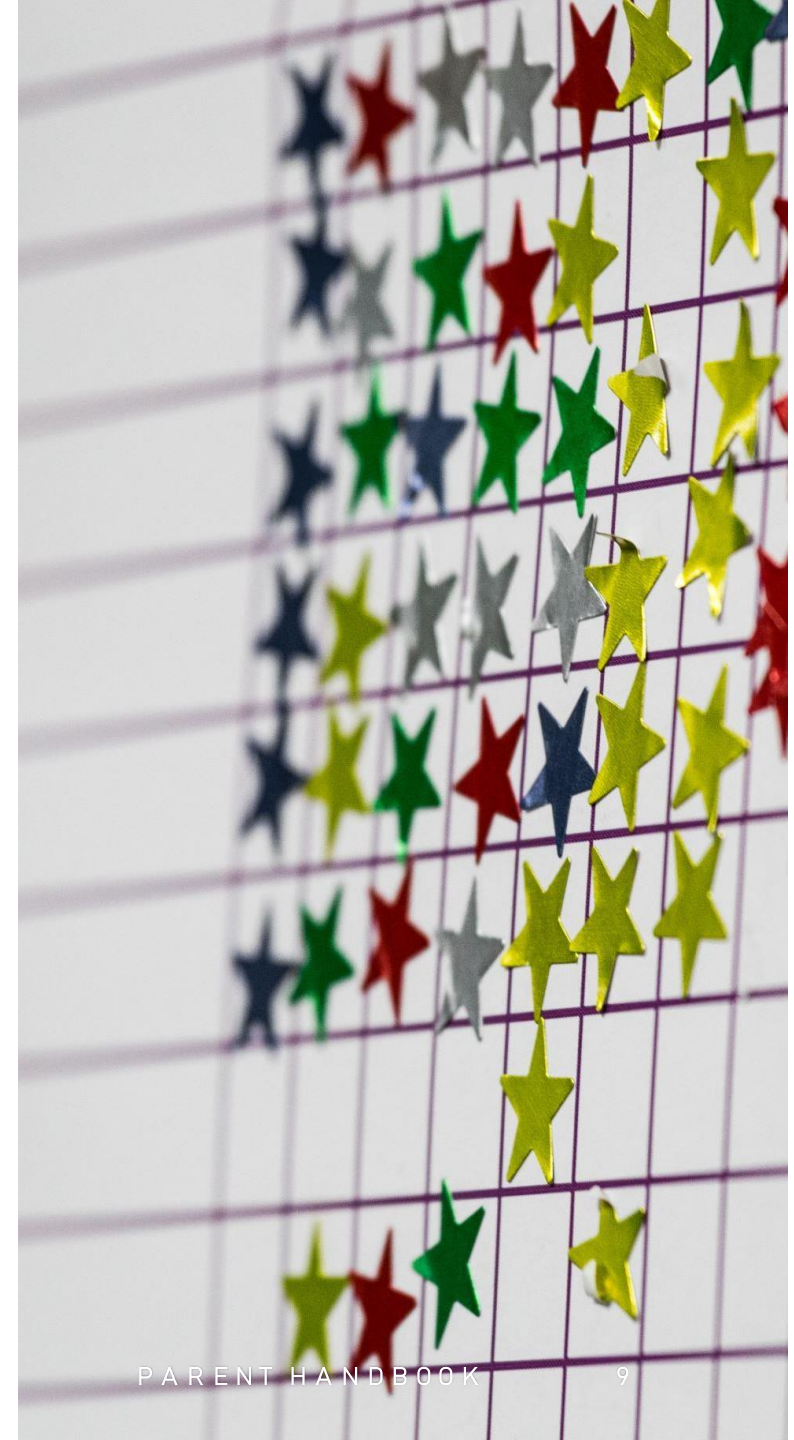
Parents and Guardians are reasonably expected to:

- Treat staff with dignity and respect at all times, and when attending school events, they are responsible to model these standards of behaviour
- Follow established protocol in expressing concerns about staff members
- Ensure that their child attends regularly and punctually
- Help their children understand and succeed in meeting the behavioural expectations outlined in this Code of Conduct, / Student Handbook
- Contact the school regarding their child's needs (academic, social, emotional and behavioural)
- Demonstrate support for the school and offer constructive input
- problem-solve in a manner respectful of all involved



Attendance

- In accordance with the updated Provincial policy regarding attendance, the Interlake School Division has also updated its attendance policy.
- In short, please contact the school if your child is going to be away
- Frequent absences (k-8 is more than 10% a term) impacting school MAY result in:
 - A student support file being opened
 - A case worker from the school being assigned to create an attendance plan with your family
 - Family meeting at the school
 - Ongoing frequent absences require the school to follow up with our student services department and possible referral to outside agencies for family support
 - Link to NEW attendance policy [here](#)



Attendance and changes to schedule

- Please have a parent call, text, or email if you are going to be away – whether because you are sick, for an appointment or for sports or ... whatever PLEASE let us know
- If you are away, make sure that **you are responsible** to check in with your teachers to collect what you have missed – sometimes it means doing some catch-up in a morning or during a break
- If you are making changes to the afternoon pick-up/drop off schedule, please have parents email, call or text that information to your homeroom teacher or Ms. Crow **BEFORE the end of the day**

Fire drills

- We will do ten per year- this is why we ask that you have indoor shoes on your feet all the time
- Alarm will sound and you will be asked by your teacher to line up and single file out of the building quietly and quickly without running
- Line up again for attendance
- If we need to evacuate the building, we evacuate to grosse isle hall – we practice this once a year
- If there is a lockdown, and a fire alarm sounds – the lockdown is what you obey unless your teacher determines that the fire risk is real and greater



Lockdown

- 2 practices a year
- A lockdown is called because of a threat in the building
- You will hear an announcement calling for a lockdown
- Your teacher will quietly direct where you should go – generally out of sight of the doors and windows, lights are turned off
- **Silence** is the expectation
- Following a lockdown practice, there is opportunity to ask a few questions



Hold and Secure

- This is called because of a threat in the area
 - This could be known or unknown
 - Could be an animal or a person
 - Could be environmental
- All exterior doors are locked (which they always are) and there would be an indoor break if needed
- Everyone just stays indoors until there is a change in threat
- We don't practice these



Bus ridership

- You are asked to be at your stop 5 minutes before your scheduled time
- Respect and kindness remain the behaviour expectations
- Stay in your assigned seat
- Stay in your seat until the bus has stopped at the school or your home
- If you aren't going to be at school please have a parent let the bus driver know so that the bus isn't waiting for you
- If you are going home with someone else or someone is coming home with you, please ensure that the school knows BEFORE the end of the day – both parents need to notify the school
- Repeated or severe inappropriate behaviour on the bus **could** result in temporary or permanent alternate assigned seating even, suspension from the bus



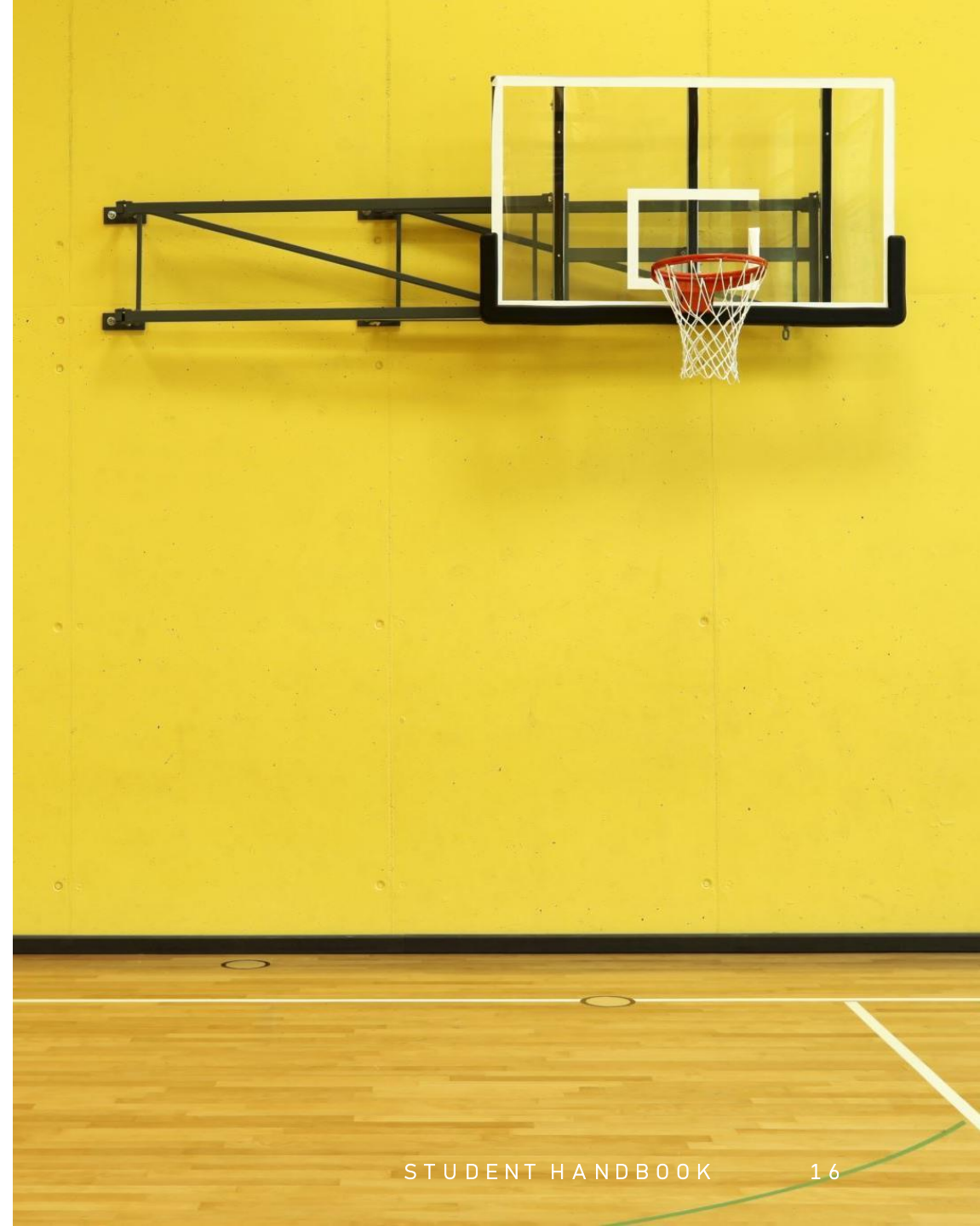
Homerooms

- 5/6's --> Mrs. Clemis
- 7's --> Mrs. Olson
- 8's --> Mrs. Baldwin
- These are the rooms where you start and end your day
 - When you get to school in the morning, get all the things that you need for the morning block and have them at your spot BEFORE you head to the gym or outside or visiting



Gym expectations for mornings and breaks

- There will be a schedule of who and what can be in the gym for mornings and breaks
- You may choose to go into the gym in the am, ONCE your stuff is ready on your spot in your homeroom for O' Canada and morning announcements
- You are expected to leave the gym and storage room tidy when you leave at second morning bell
- No slapshots, hockey stick = goggles on your eyes
- Play respectfully of others and of the equipment
- If you aren't able to meet these expectations to earn this privilege, then you will need to take a break until you are able to demonstrate that you can





Outdoor expectations

- The adults outside are in charge – Mrs. Dandeneau, Mrs. Hayward, and Becky
- Play respectfully and kindly
 - no sports require heavy or hard body contact – touch or tap as long as everyone is being **reasonable and respectful with the touches and/taps** – you will be asked to leave the game if you aren't able to play by the school rules
- You must stay in the school field and OFF the parking lots and away from parked cars
 - If you are wanting to go onto the trail or into the bush, **each person MUST** ask an outdoor supervisor EACH break
- If you take equipment out – YOU must bring it back into the school and put it where it belongs
- You are expected to STOP playing and return to the school when the bell goes
 - You are expected to be responsible to be on time for your classes

Lockers

- This is your responsibility to keep tidy
- It is **NOT** a closet or personal library
- Be respectful of the folks around you
- Locks are an option, but your homeroom teacher **MUST** either have a second key OR your combination – this is **IN CASE** you are away sick and either your teacher or a work partner needs something from your binder, OR you forget.
- You will have around 2 days a month with an adult to help make sure lockers are tidy and organized



Student Fees and Fundraising

- There are a few fees throughout the year
 - September – Fee for school supplies
 - 2023 – 2024 \$35.00 (Due Sept 28, 2023)
 - Depending on the activity or sport, there may be a small fee
 - This can help cover costs like Refs, team registrations, activity cost or transportation (IF it is an extra-curricular activity, like skiing or end of year trips)
- There is also limited fundraising throughout the year BUT when conducted, goes towards programming for our students
 - Our school's on-going fundraiser, is our weekly hot-lunch program. This is completely voluntary, and we do our best to manage the rising cost of supplies as well as the programming that we may not be able to fit within a small school's annual budget
 - Our PAC may also conduct some fundraisers throughout the year – participation is voluntary and greatly appreciated





School Supplies

- Ensure that everything is labelled
- Be responsible for your possessions – things will need to move with you from class to class and to your locker for each break
- If you need something new, ask your homeroom teacher.
- These supplies are purchased by teachers but paid for by parents. Each student has a certain amount,
- If you are careless with them and use up your supply, we will contact parents to arrange for more or ask them to supply them
- If you are bringing additional supplies from home, please label them too!
- Here is what we asked you to bring:
 - Headphones (able to plug into a headphone jack)
 - 2-3" zipper binder
 - Clothes for PE and runners (non-marking soles)
 - Indoor shoes with non-marking soles (which could also be their PE shoes)
 - Water bottle
 - Back-pack
 - Optional:
 - Lock for locker

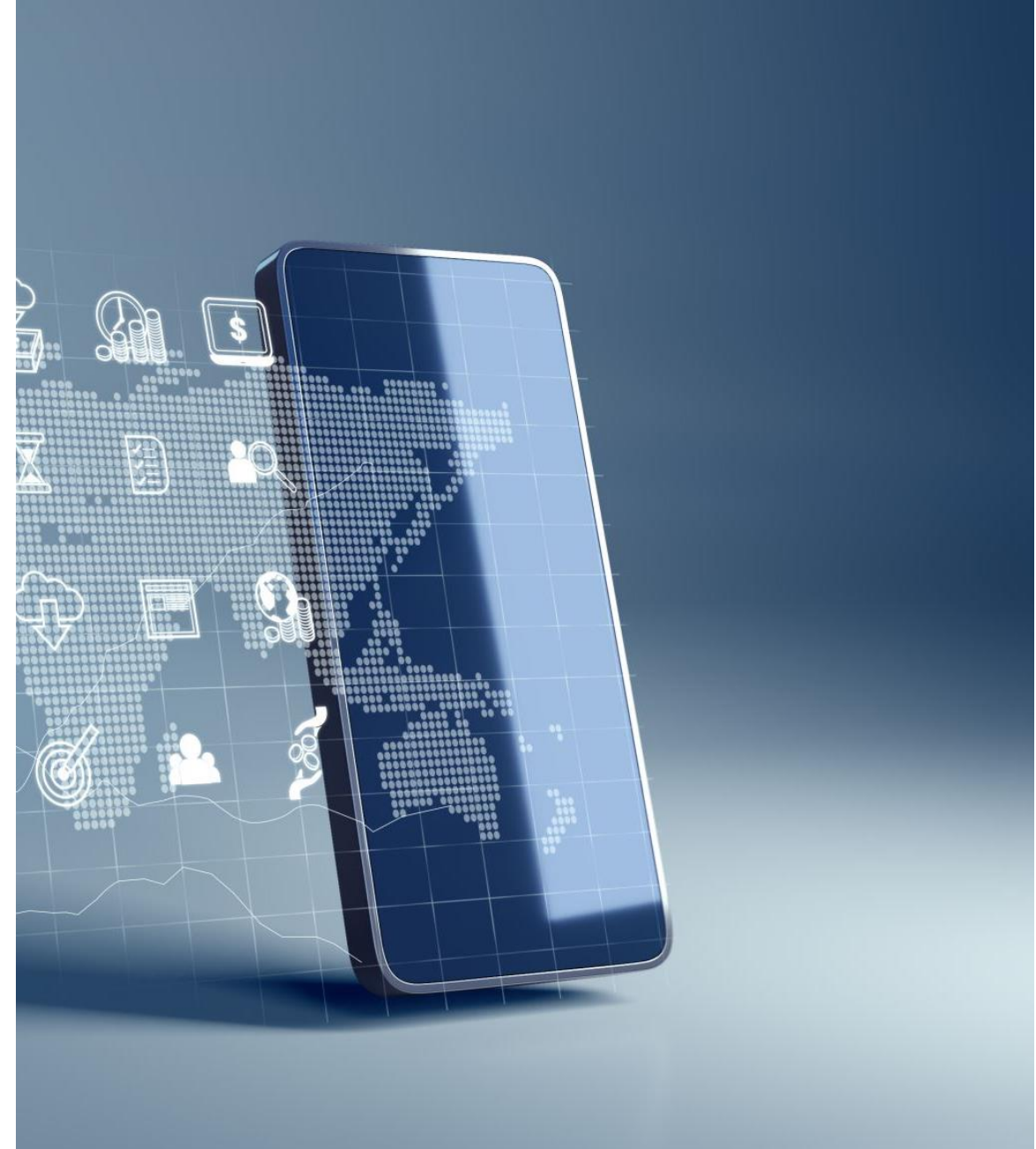
A black laptop is open on a glass table, with a smartphone resting on its keyboard. The background is a blurred indoor setting with large windows and some furniture.

Laptops

- We received new ones over the summer
- They will be assigned to share between 1 5/6 student and 1 7/8 student
- Sign out after each use and ensure that you plug it in
- They are for school related work and activities
- They cannot be used in the mornings unless you ask an adult, work in a space where an adult is present and are working on school work
- They cannot be used in the presence of food or drinks
- Do not ADD programs or games onto the computers – it is one of the ways that they get slowed down and need to be sent in for repair
- They can be monitored – including your passwords – make school appropriate choices
 - YOU are responsible for what happens to your computer while you are signed in. So:
 - Don't share your password with anyone
 - Sign-out when you are done with it
- Must be used respectfully and put away appropriately or they will not be a privilege for you

Personal devices

- They are a privilege to have at school and are NOT required to be here
- 5/6's with personal devices will leave them in lockers throughout the school day – they can be checked at breaks but remain in lockers unless directed otherwise by an adult
- 7/8's MAY have their personal devices at breaks BUT
 - Are expected to eat at break times
 - Are expected to get outside at outdoor times
 - Are expected to keep their devices in lockers or out of distraction during class time, unless directed by an adult
- If the personal device becomes a distraction, will be taken by the classroom teacher until the end of the day or may be asked to keep the device at home



Social media

- You may NOT take pictures of other children at school without their permission
 - And you absolutely cannot post/snap etc pictures of other children
- If your activities on social media (snap etc) impact someone at school, there may be school based consequences for you
- If you couldn't say it to that person's face in front of your homeroom teacher... don't post it or say it online
 - You are responsible for your words, whether you say them online or at school – if they impact school



Seating plans

- Each teacher in their classroom spaces will determine where everyone is sitting – this is done for a variety of reasons to support learning and teaching
- This plan **will** change throughout the year as the classroom teacher needs it to
- If something isn't working, have a quiet conversation with your classroom teacher at the end of a class or break



Nutrition breaks

- 10:40 – 10:55am
- 1:00 – 1:25pm
- 5/6's will eat in Mrs. Clemis' room
- 7/8's can **CHOOSE** either Mrs. Olson's room or Mrs. Baldwin's room.
 - No moving rooms once you have started.
- If you need to use the washroom, please ask the lunch supervisors
- Stay in classrooms until the bell goes, push in your chair, put lunch away and THEN head outside or gym (depending on schedule)
- You are expected to leave your eating space and classrooms tidy – use a wipe or broom if you need to tidy up



Library & school books

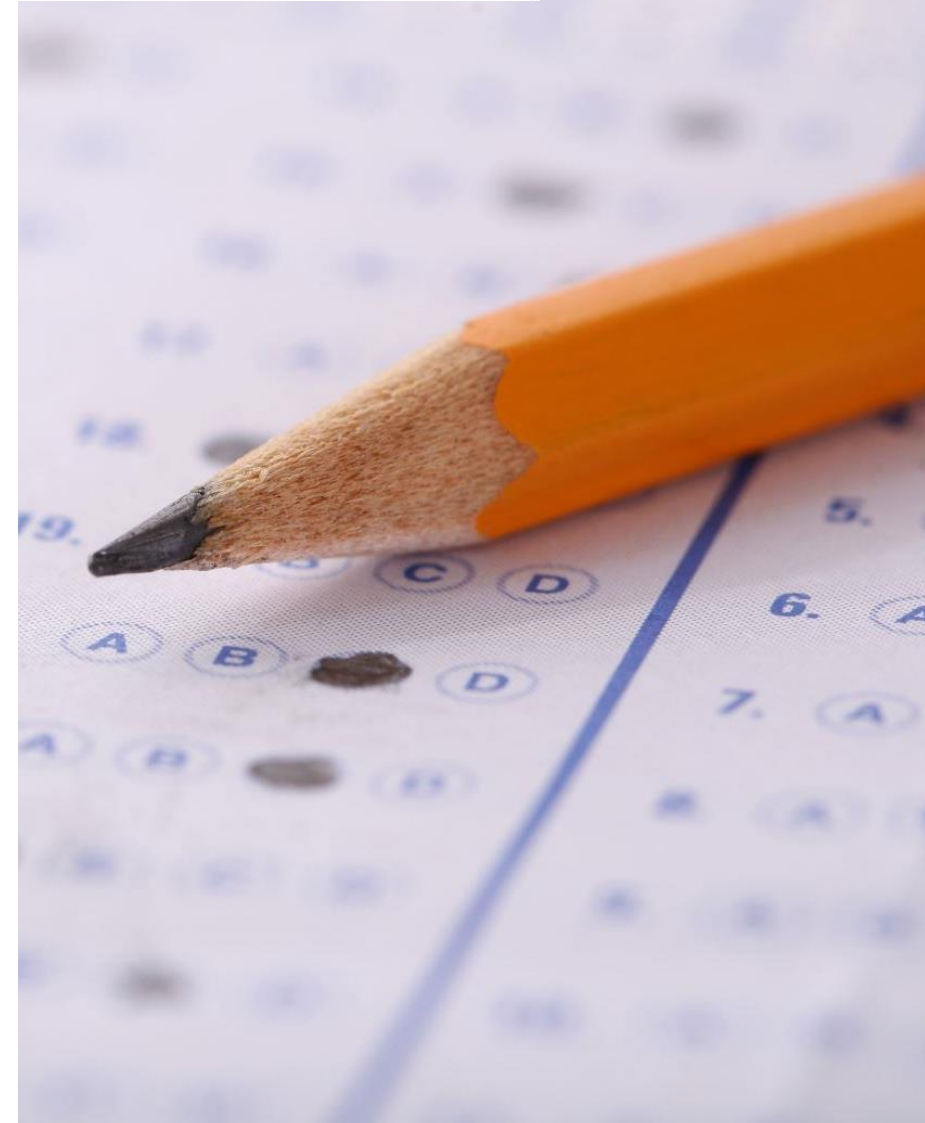
- Sign out library books with Mrs. Hayward or on her sign out sheet
- **YOU are responsible for the books that you sign out –**
 - Don't lend them to a friend – they can sign the book out once you return it
 - Don't leave them laying around
- Take care of the books – treat them respectfully
- Return them when you're done – less likely to lose them and then the next person can have a turn with the book
- The bookmobile will come once a month for you to check books out with them as well – those can be returned to Mrs. Hayward's Bookmobile box in our library
- If there is a book or series that we **MUST** get, please chat with Mrs. Hayward or Mrs. Clemis or Ms. Crow



Assessments & Evaluations

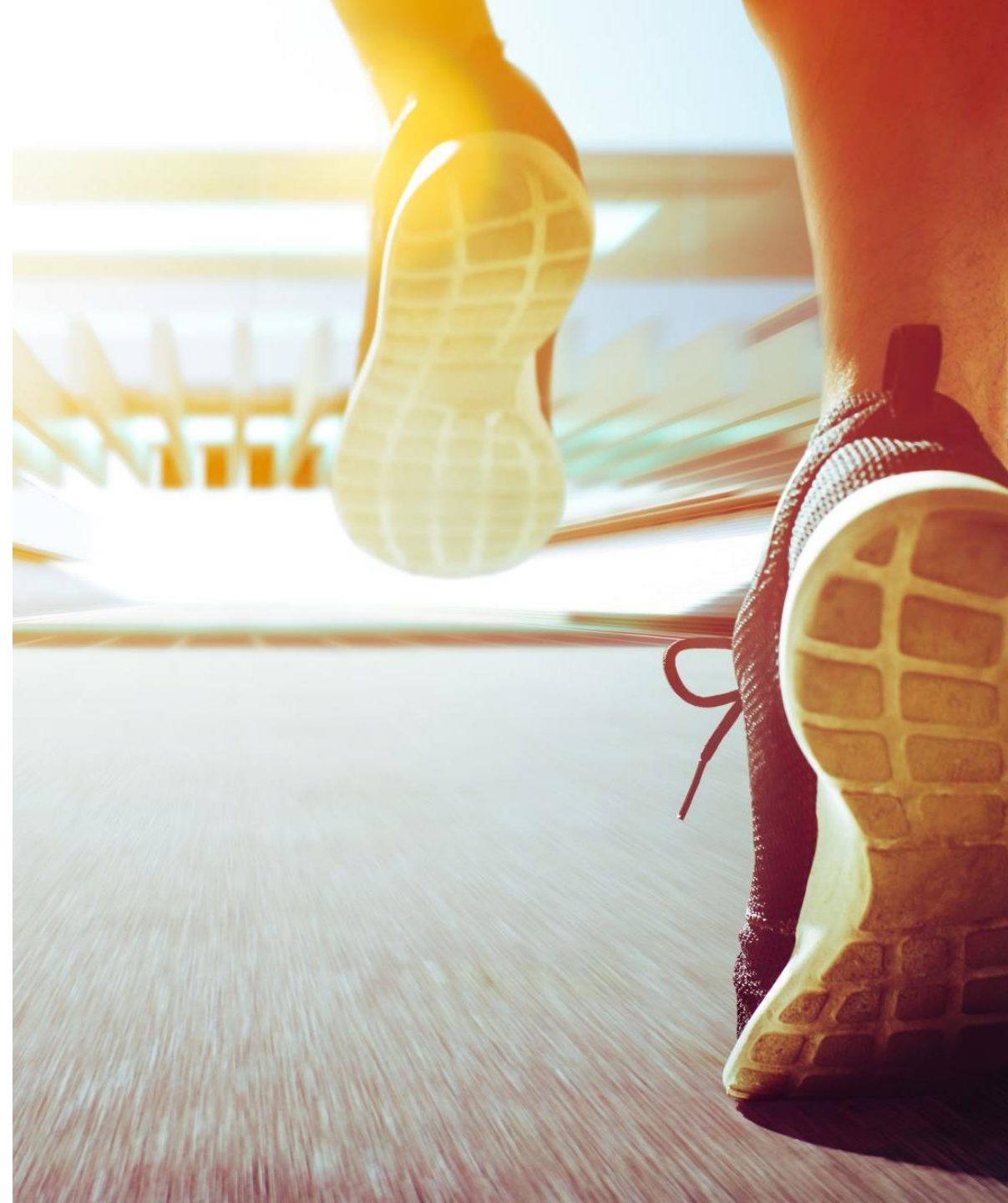
Grade Scale	Academic Achievement of Provincial Expectations
4	Very good to excellent understanding and application of concepts and skills
3	Good understanding and application of concepts and skills
2	Basic understanding and application of concepts and skills
1	Limited understanding and application of concepts and skills
ND	Does Not yet Demonstrate the required understanding and application of concepts and skills

- Assessments of student learning happen throughout the school year and take various forms.
 - Collections of evidence will:
 - a) reflect the learning goals of the course;
 - b) take multiple forms to meet the needs of all students;
 - c) include goal-setting, monitoring progress, and reflecting on growth and achievement;
 - d) include evidence of learning throughout the year;
 - e) inform teacher/parent/guardian/student conferences; and
 - f) include evidence of student achievement from three different sources – observations, conversations, and student products
- They may be formal or informal.
- Manitoba Education has a 4-point scale for grades K-6 and a combination of the four-point scale and a percentage for 7-8
- There are three reporting periods each year, and two opportunities for progress conversations. 2023 – 2024:
 - T1 Progress Conversations: TBD (week of Oct 23- 27)
 - T1 Report Cards Home: December 8th
 - T2 Progress Conversations: TBD (week of Feb 20-23)
 - T2 Report Cards Home: March 22, 2023
 - T3 Report Cards Home: June 25th, 2023
- If you have questions regarding your child(ren)'s progress or work, please contact the class teacher



Physical education

- All students are expected to participate to the best of their abilities
- If you aren't able to participate in PE, due to illness or injury – a parent needs to contact Mrs. Baldwin
- Have a change of clothes – and gym runners so that you can safely participate in PE
- At various parts of the year, PE will take place outside for various activities
- Mrs. Baldwin will go through the rest of her expectations for a safe and fun year in PE



Family Life: Physical Education Sensitive Issues

- There is a curriculum for Grades 5 & 7 – due to the combined classes in Grosse Isle, the Sensitive Issues topics will be done every second year with whole classes
- BEFORE the classes are taught a permission slip will be sent home for all families to review and return
 - Should you choose to opt out, your child will be given an independent project to work on and complete while the class is occurring
- Grades 5/6 - 2023-2024 school year
- Grades 7/8 - 2023-2024 school year



Binder organization and Homework Periods

- You are responsible for all the paper that you get throughout the day – put your name and date on everything that you get!
- About 2x a month you'll have an opportunity to tidy up your binder with an adult for help – but this is something that you should be responsible to keep on top of
 - If you need help to either tidy up or organize, there are peers and adults who can help!
- Homework periods are 1x cycle – they are for lockers, binders, AND for school related work, homework, catch-up, extra time for projects or assignments, or practice for other subjects – if you are done **everything** you may:
 - Read silently
 - Do some creative writing
 - iXL or xtra math





Classroom expectations

- Each classroom is run by a different adult so the expectations may be a little bit different and in the coming weeks each of us will take time to go through what we expect in each of our classrooms and courses but overall, we expect that you are:
 - **Respectful**
 - With your words, actions, volume and tone
 - Towards peers and adults
 - **Kind**
 - To yourself and others
 - **Attentive**
 - To what is being asked of you and of the space around you
 - **Responsible**
 - For your work, your words, your actions, your possessions and your privileges
 - **Honest**
 - Ask for help when you need it
 - Acknowledging your mistakes, is how you learn and grow



WHAT DO YOU HAVE QUESTIONS ABOUT?

WHAT DID I MISS?